

REPAIR CLAMPS

FOR QUICK, SIMPLE AND LASTING REPAIRS OF CRACKED, ERODED AND DAMAGED PLUMBING, GAS, AND OTHER PIPELINES.



NEW!

Double installation handle, which enables easier and faster installation!

Repair Clamps for Underground or Above Ground Installation:

- For quick, simple and lasting repairs:
 - of cracked,
 - eroded,
 - damaged plumbing,
 - gas, and other pipelines.
- Sizes from Ø 57 mm to 500 mm and more.
- Standard use on plumbing pipes (Water temperatures of up to + 60°C)
- Useful for all types of pipes (PVC, PE, steel, AC...).
- The casing of the repair clamp is made of quality stainless steel AiSi 304.
- The gasket is resistant to wear and aging.
- The screws are made of stainless steel and covered in a special dry weld prevention coating.
- All repair clamps are packed in cardboard packaging, which prevents an accelerated aging of gaskets due to exposure to UV rays.

Improvements:

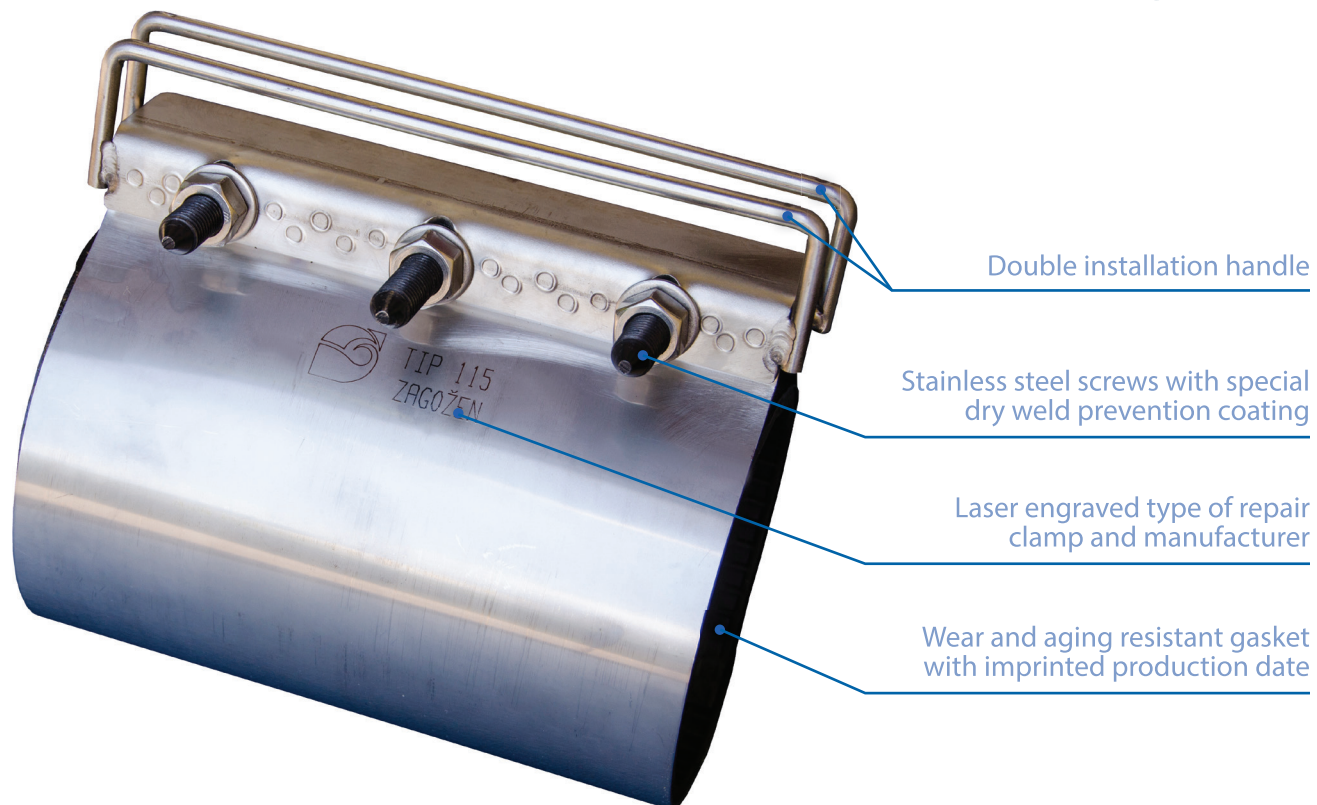
- Double installation handle.
- Laser engraved type of repair clamp and manufacturer.
- The gasket is imprinted with a production date.

FOR QUICK, SIMPLE AND LASTING REPAIRS



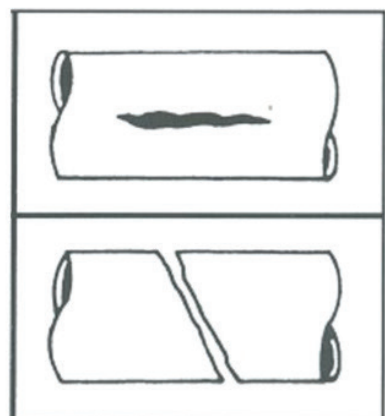
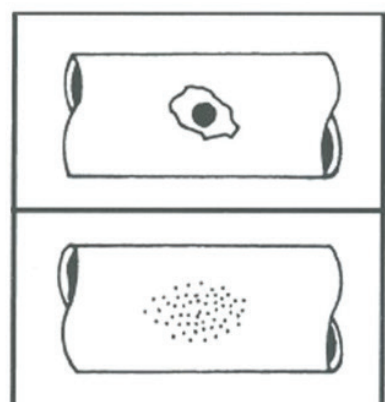
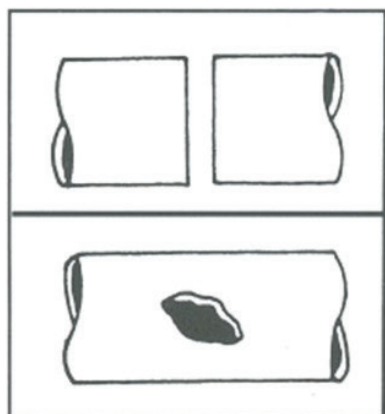
PRODUCT TYPES, DIMENSIONS, USAGE AND PRICES

Type	External pipe diameter (mm)	Standard length (mm)	Use for pipes						Price in € VAT not included
			PVC PE	Cast iron	Steel	AC 6 bar	AC 10 bar	AC 16 bar	
57	57-62	200						50	41,34
63	63-68	200	63	50				50	41,23
68	68-75	200						50	41,52
75	75-83	200	75	60	65			60	41,52
82	82-91	200	90	65	80			60	41,66
95	95-104	200		80				80	42,35
104	104-112	200	110		100			80	42,98
115	115-125	200	125	100		100	100		43,84
131	131-141	200	140		125			100	52,50
140	140-150	200		125		125			54,50
151	151-164	200	160		150		125	125	54,60
166	166-178	200		150	150	150			59,00
178	178-190	200	180				150		62,00
190	190-202	200	200			175		150	68,00
215	215-227	300	225	200	200				109,00
233	233-246	300					200		113,50
250	250-262	300	250					200	128,00
269	269-281	300	280	250	250	250			129,00
285	285-297	300					250		130,50
306	306-318	300	315					250	133,00
315	315-327	300	315	300	300				140,50
345	345-357	300	350				300		146,00
366	366-379	300		350	300			300	148,50
400	400-412	300	400				350		148,50
500 DV	500-512	300	500						255,00



At the wish of a client, we can supply:

- Intermediate diameters.
- Larger diameters - repair clamps come in several parts (up to as much as DN 900 mm).
- Extended (double) lengths.
- Also available in two section version.
- **We can offer the manufacture of repair clam by measure!**



Recommendations for installation:

1. Measure the diameter of the pipe and select the right size of the repair clamp using the table.
2. Clean the pipe completely in the repair area, removing rust and grease as well. The surface must be smooth and clean. It is best to clean with suds, which also improves the functionality of the repair clamp. Gasket, screws and nuts must not be greasy!
3. Before installing, mark the position of the repair clamp on the pipe to ensure a proper seat of the clamp.
4. Take the repair clamp from cardboard packaging right before the installation.
5. Open the repair clamp and install it on the damaged area.
6. When installing, pay attention that the gaskets and holders are clean and that there are no foreign objects between gasket and pipe.
7. Using appropriate tools (long screw wrench - min. length 300 mm and/or a torque spanner) improve and facilitate the installation.
8. The screw thread must not be dirty.
9. If you do not use a torque wrench, do not overly tighten the nuts.
10. When using the torque wrench, the following torque is set: M12:65Nm, M16:110Nm
11. After 20 minutes, test screwing torque and, if needed, tighten again.
12. Before covering the repair area carry out a pressure test.
13. When pouring soil around the repair area, do so attentively and carefully.



Zagožen,
proizvodno in trgovsko podjetje, d.o.o.
Cesta na Lavo 2A,
3310 Žalec | Slovenija

t | +386 (0) 3 713 14 20
f | +386 (0) 3 713 14 22
e | info@zagozen.si
w | www.zagozen.si

